
Panchayat Enterprise Suit
(PES Application)
By MoPR
Developed by NIC

5 Core PES Applications in 3 Tier PRIs (RLBs)

| Sl. No. | PES Application | Description |
|----------------|----------------------------------|--|
| 1. | Local Government Directory (LGD) | Master Data for Zilla Panchayat (ZP) >> Block Panchayat (BP) >> Gram Panchayat (GP) wise village mapping with Unique Code for each Unit. |
| 2. | PlanPlus | Captures Gram Panchayat Development Plan (GPDP) |
| 3. | ActionSoft | Monitors physical & financial progress of activities/works. |
| 4. | PRIASoft | Captures receipt & expenditure details through voucher entries and automatically generates cash book, registers, etc. |
| 5. | National Asset Directory (NAD) | Captures details of assets created/maintained along with GPS coordinates. |

Local Government Directory

Target Users

Central level officials

State Panchayati Raj Department

State Urban Dev. Department

Revenue Department

Any other department responsible for formation of new villages/village Panchayats

Citizens

Key Features

Maintains

- Revenue/ Land region Entities along with their PESA Status
- Local bodies and their mapping with constituting land regions
- Blocks
- Habitations
- Wards of local bodies ,Parliament and Assembly Constituencies

Captures State wise

- Panchayat/Local Government setup
- Urban Local Government Setup
- Traditional Local Government Setup
- ER and Official Designations and their Reporting hierarchy

Key Features

Assigns Unique codes to Local bodies and Land regions and captures State Specific standard Codes

Captures Govt. Orders/Notifications for each modification

Follows Versioning to keep track of changes occurred on an entity

Conversion of Local bodies from RLB to ULB etc.

Captures

- Administrative Unit Levels (like Divisions, Circles, Halkas) and Administrative Unit Entities
- Ministries , Departments and Organizations

Facility to Freeze/Un-Freeze Land Regions and Local Bodies

Download Directory in various formats

Search

PRIYASoft

Rational for PRIASoft

- Based on Standard Head of Accounts Concept
- Complies to C& AG formats
- Standard formats(8) prescribed by C&AG for all level of PRIs
- Web based software application developed by NIC at National Level.

**1st
tier**

- Major Head: 4 digit
- Relates to 'Functions' given in 11th Schedule
- 23 Major Heads

**2nd
tier**

- Minor Head: 3 digit
- Programs/ Unit within 'Functions'

**3rd
tier**

- Object Head: 2 digit
- Item of Receipt/ Expenditure

PlanPlus V2.0

ENABLING PREPARATION OF
PARTICIPATORY
GRAM PANCHAYAT DEVELOPMENT PLAN
(GPDP)

PlanPlus v2.0- Objective

- Supports Need Based Planning rather than Scheme-based planning.
- Captures different types of Activities (Public Works , Beneficiary Oriented Programme & Costless Activities)
- Facilitates convergence of funds from central, state sponsored schemes and other resources to address the needs of the people.
- Facilitates integration of plan prepared by planning unit into a single GPDP plan document .
- Facilitates tracking of FFC Fund flow to GP .
- Generates GPDP Plan of a Panchayat.
- Generates number of reports related to FFC

PlanPlus Sections

Master Data

- Mapping of Focus Area, Schemes & Services at state level

Suggestion Section

- Captures suggestions from public, Suggestions/resolutions made in the Gram Sabha, Approval of Citizen suggestion

Resource Envelope Section

- Captures Information about Resource Envelope Available with Planning Unit (Budgetary Allocation & Opening Balance)

Planning Section

- Facilitates creation of Annual Action Plan thru allocation of available resources to Prioritized works

PlanPlus Sections

Admin Approval

- Accord/endorse admin approval and Generate GPDP Plan

Report Section

- Various reports that reflect State wise Focus Area, State wise Scheme list, Approved & Pending Action Plan Report, FFC Transfer Report, Suggestion Report, Panchayat Development Plan Report, Sector wise activity status report, plan status report

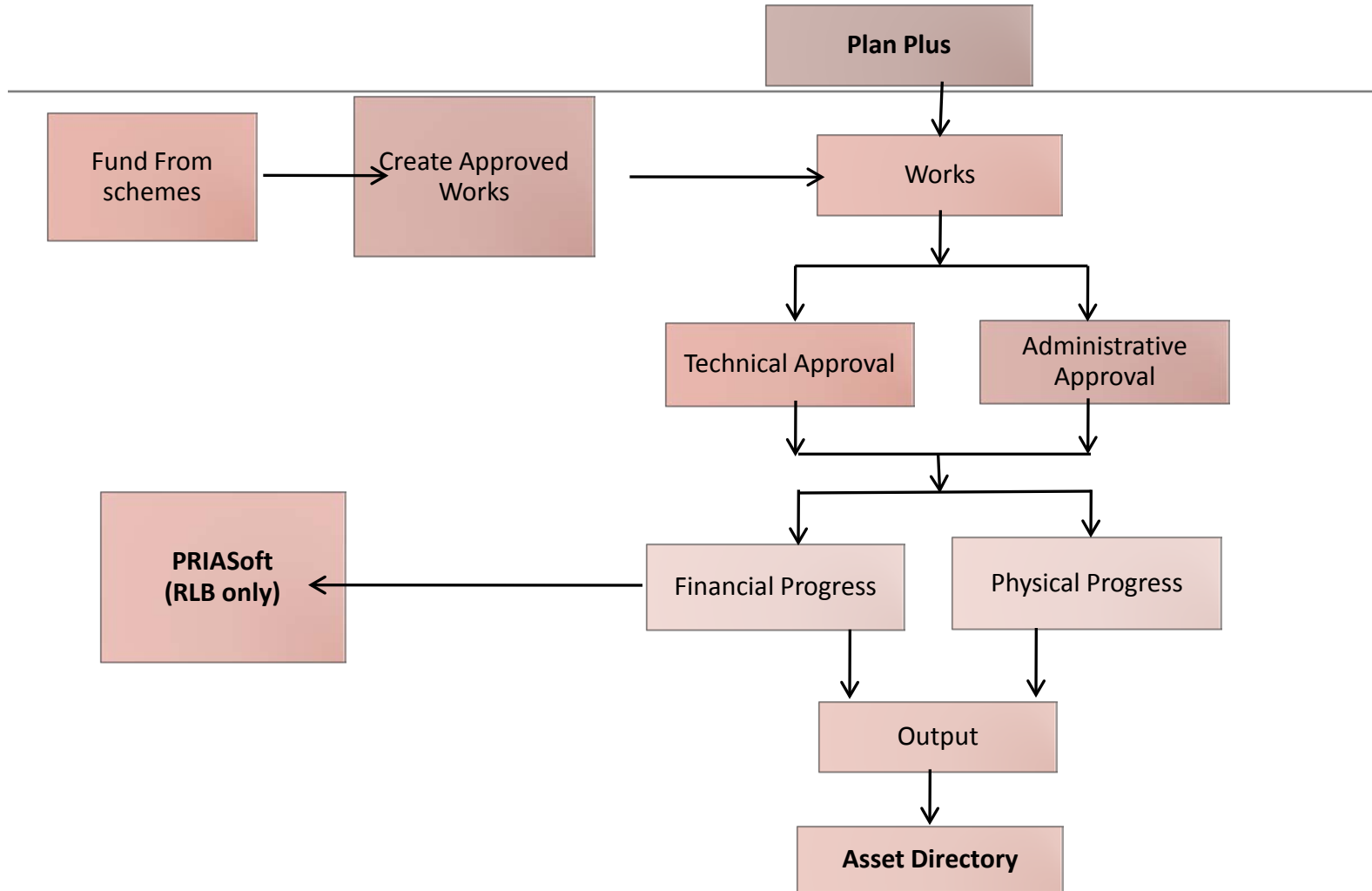
ActionSoft

Tool for Work Progress Reporting System

Objective

- Facilitates Decentralized Reporting of Progress of works in Local Language by
 - Facilitating the RLB, ULB , Line Departments and Autonomous body to report the physical and financial progress of works
 - Working in collaboration with PlanPlus and PriaSoft
 - Capturing the work execution flow
 - Converging and keeping track of the flow of funds from different sources during implementation
 - Helping to bring about total transparency in the reporting of physical and financial progress

Process Flow – Action Soft



Features

Manage works taken up by various plan units such as Rural Local Bodies, Urban Local Bodies, Line Departments, Autonomous body.

The works would come from:

- a. The Approved works of **Action Plan** of a particular plan year from PlanPlus (in case if PlanPlus **is** operational)
- b. Plan Units can enter the works definition **directly in ActionSoft** (in case if PlanPlus **is not** operational)

Approval by Technical & Administrative Authorities.

Release of funds for the expenditure incurred.

Features

Execution of work by adding Work Status Details and recording progress details.

The progress of work can be reported in 2 ways:

a. Physical Progress-Provide the Physical Progress details of the works.(For Asset - asset wise or location wise)

b. Financial Progress- Provide expenditure details of the works. In case of RLB, expenditure detail reported in PRIASoft.

Monitoring the status of works undertaken under various Central and State schemes by various plan units through reports which are available in the citizen section.

Feedback on work execution details by all Stakeholders and Citizens

National Asset Directory (NAD)

NAD STAKEHOLDERS

Central Line Department

RLB User

ULB User

Line Department User

Citizen

KEY FEATURES

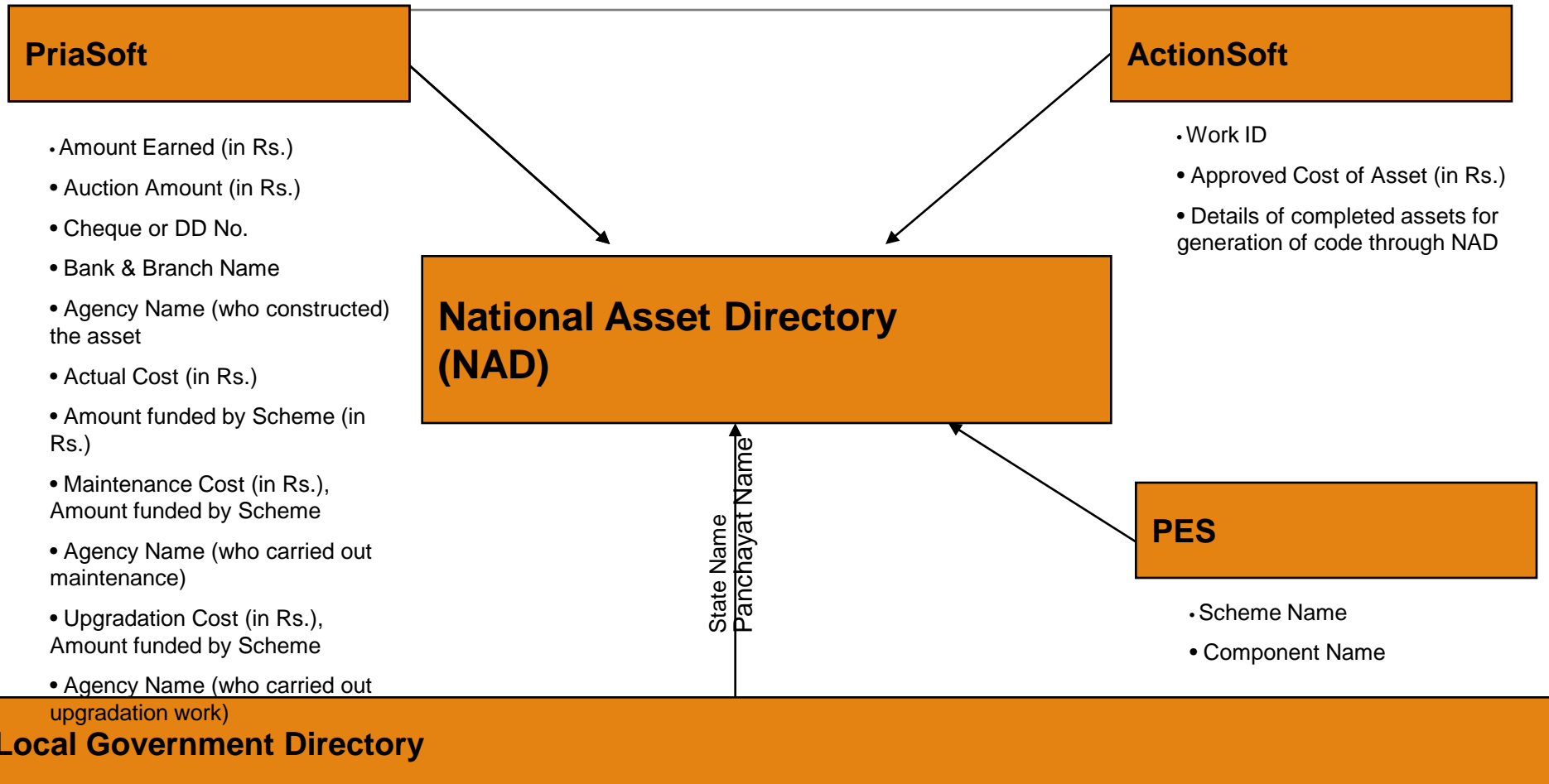
NAD captures asset disposal details including reason for disposal, agency that purchased the asset, disposal date, amount received (yes/ no), amount received through disposal (Cheque/DD/Cash details), supporting documents etc.

NAD generates reports on Complete List of Assets, Asset Maintenance Details, Upgradation Details, Earning Details, Disposal Details and Transfer details.

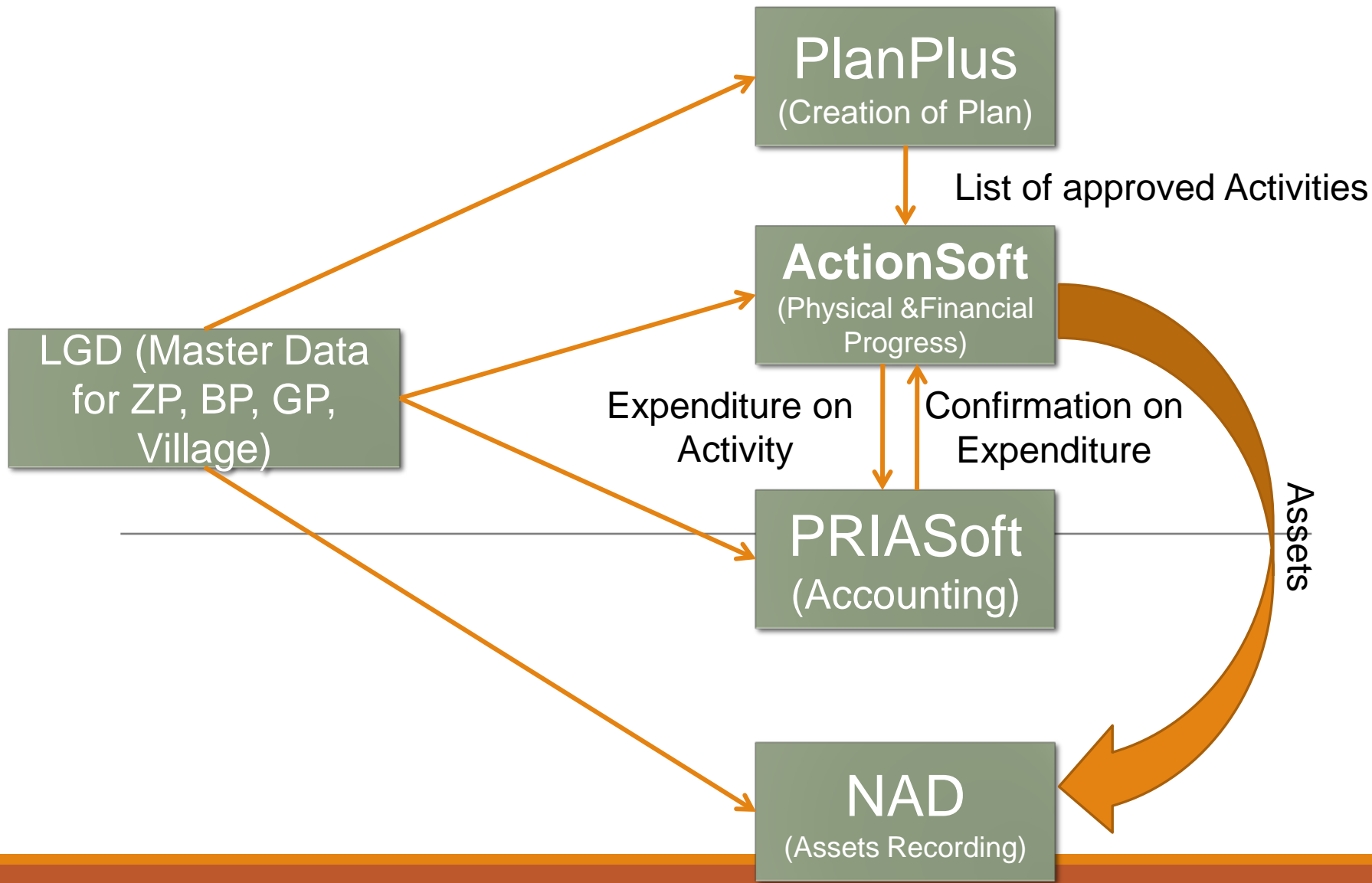
NAD provides summary report of asset including State wise asset and Block wise/ GP wise asset.

NAD also captures data entry status report of each state through Dashboard report.

INTEGRATION WITH PES



Integration of 3 Core PLS Applications



Area Profiler



Key features

- **Local Government Body/Panchayat Profile** – The profile include brief description about the Panchayat/ local body office, connectivity to the local government, body neighbouring local bodies, places of tourist interest, boarding and lodge details etc.
- **Family Register-** Facilitates Village panchayat to maintain the Family Register village wise. Any birth/death in the family is managed through addition/updation of family member. It also facilitates maintenance of migration details of the family and family member with in village, across village and also across local government.
- **Election and Elected Representatives Details-** Facilitates Panchayat/local governments to maintain the post election and elected representatives details.
- **Local Govt. Employees Details-** Facilitates Panchayat/local governments to maintain their Employee details.
- **Standing Committee & its Member Details-** Facilitates smooth synchronization of various committees functional at Panchayat/local governments and its committee member details.
- **MP and MLA Details:** Facilitates States to enter the details of Member of Parliament (MP) and Member of Legislative Assembly (MLA) details.

NATIONAL PANCHAYAT PORTAL

Objective

NPP site aims to provide the unique web identity and presence to each PRI in the country

- This generates dynamic portals for all district panchayats, intermediate panchayats, village panchayats in the country as well as State PR departments and MoPR site.
- Facilitates content management & exchange among NPP sites
- Each PRI Portal acts as a window for information & services provided by the respective PRI
- Each PRI Portal will publish relevant reports generated by various PES Applications

NPP SITE STRUCTURE

Each **NPP Site** will comprise of one or more **Portal Pages**, of which one will be designated as a **Home Page** for the site.

Each Portal Page will consist of one or more **Portlets**.

Each portlet will contain one or more content items

Each Portlet can be configured to display content of specific metadata values of Subject, Audience, Content Type etc.

NPP System : Broad Functions

Complete Content Management

Create Content

Edit Content

Publish Content

Archive Content

Restore Content

Easy Content organization & display (video uploading)

NPP facilitates display of contents in portlets based on the pre-defined set of rules.(Here Portlet Rule/Configuration is defined at the time of portlet creation)

One or more Portlets can be placed inside a portal page for better organization & display of the content

Supports Unicode based Local Languages

SERVICEplus

ServicePlus – For Citizens

Provides a single, unified portal for the citizen to

-
- Access information about any service provided by the government
 - Register online and indicate preferences for alerts on different types of services
 - Manage and maintain all enclosures/documents in the online repository which can be re-used across all services
 - Submit application online, offline or through kiosk
 - Track the applications online irrespective of the mode in which the application has been submitted
 - Subscribe to alerts and announcements related to various services
 - Receive alerts on the status of a submitted application
 - Lodge grievance in case of deficiency in service or failure to deliver service

ServicePlus – For Government

Allows any department at any level of government to

- Quickly define and configure its service using a wizard-like interface
- Configure the service in terms of beneficiary profile, submission modes, service charges, payment mechanism, service delivery modes, application form, service output, notifications and process flow
- Configure Auto-Approval and Legacy services
- Define grievance redressal policy for a service
- Integrate back-end processes with service work flow
- Launch a service within minutes
- Monitor performance of government functionaries and kiosk operators

Training Management Portal

Target Users

SIRDs, DTCs, ETCs

State Line Departments

Local Gov. Bodies like Zilla panchayats, panchayat Samiti, Municipality

Key Features

Provision to capture training requests

Preparation of training calendar in work flow manner

Generation of Invitation letters, Participation Certificates

Training Process Scheduler

Custom Feedback Forms

Pooling of Resource Persons and Training Agencies

On-line repository of training/reading material

Impact Analysis

Managing Awareness Campaigns and Publication

Meeting Management Portal

Key Features

Provision to capture meeting agenda

Preparation of meeting calendar in work flow manner

Generation of meeting invitation and chairperson identification

Linkage with google calander

Meeting notes

Meeting minutes circulation

Progress report of meeting action points

Gujarat Status @ PES

| MoPR Application | Targeted Govt Department for PES | Support Team | Gujarat Application |
|----------------------------|---|---|--|
| LGD | Administrators | E Panchayat Coordinator | Not Available - 33 Districts Data punched |
| Priya Soft | Accounts Section | At District Level | GRAM |
| NAD | Planning Section & Scheme owner | And | GAM |
| Action Soft | Accounts and Planning Section with respective owner of scheme | MIS Executive | VDP |
| Plan Soft | | At Taluka Level | |
| Service Plus | Planning Section | (DLE who are trained as Master Trainer will train ePanchayat Coordinator and MIS Executive , 14 th FC Staff and Concerned Government official who will take care administrative site of scheme) | eGram Service Delivery Portal plus Department specific service portals |
| NPP | Planning Section | | Own Website However panchayatgujarat.gov.in is available under PPP |
| Training Management Portal | Talim Branch | | Not Available |
| Meeting Online Portal | All Users | | Not Available |